

**CHARACTERISTICS**

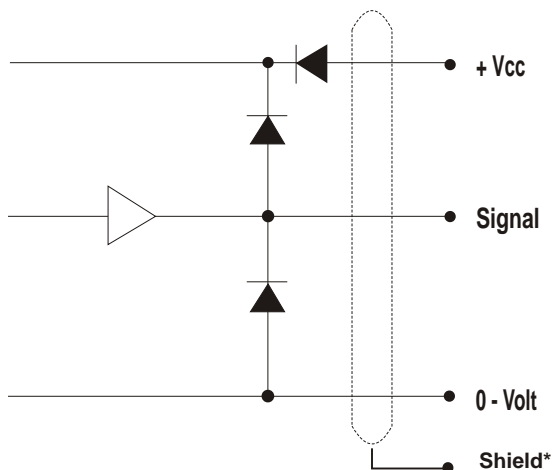
ENCODER TYPE	Hollow shaft or shaft encoder
APPROVAL	II 2 G/D EEx d IIB T6
SMD - TECHNOLOGY	Strong compact electronics
HIGH IP-RATING	Std. IP 65
LOW CURRENT CONSUMPTION	To be connected directly to PLC'S and counters
SHORT CIRCUIT PROTECTION	Thermal shut down at 155°C
WIDE SUPPLY RANGE	Min. 4,5V to max. 30V
STRONG MEC. CONSTRUCTION	Based on 2 precision ball bearings, for harsh industrial environments

**ELECTRICAL SPECIFICATIONS**

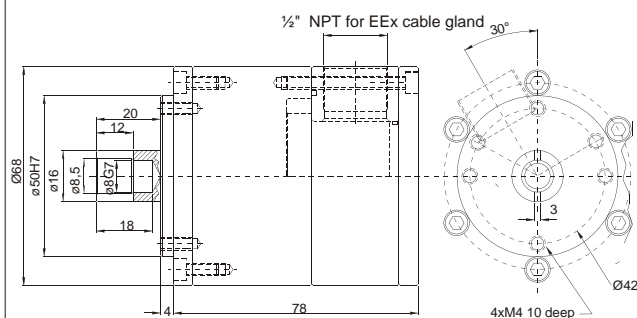
At +25°C	
Output waveform	Incremental (A, B)
Zero or index pulse	Rotation detector
Output	Totempole
Supply-voltage (Vin)	Min. 4,5V to max. 30V * Reverse polarity protection
Current (no load)	Max. 45 mA
Max. load pr. output	30 mA - (Short circuit protected) *
V Out low	Max. 500 mV @ I = 10mA
Operating temp.	- 40°C to + 75°C
Storage temp.	- 40°C to + 75°C
Max. pulse frequency	300 kHz *
V out high	Min. (Vin -0,6) @ I = -10mA Min. (Vin -1,3) @ I = -25mA
Cable data	Connector
Output signals	Standard + rotation detector
EMC certified acc. to EEEx certified acc. to	EN 50081-1 and EN 50082-2 EN 50014 and EN 50018 and 94 / 9 / EC (ATEX)
* = It is not recommended to combine max. value for all 3 parameters	

**MECHANICAL SPECIFICATIONS**

Weight	About 730 g
Materials : Housing	Aluminum
Shaft	Stainless steel
Bearings	Lifetime lubricated ball bearings
Shaft dimensions	Optional
Shaft loads	Axial max. 50 N Radial max. 50 N
Max. rev.	3.000 Rev./min.
IP-rating	Standard IP 65
Start torque	IP 66 < 0,05 Nm at 25°C IP 67 < 0,2 Nm at 25°C IP 68 < 0,2 Nm at 25°C
Mass moment of inertia	45 gcm <sup>2</sup>
Max. shock	100 G/11 ms
Bump	10 G - 16 ms (1000 x 3 Axis)
Vibration	(10 - 2000 Hz)/10 G

**OUTPUT CIRCUIT**

\* Shield connected to housing

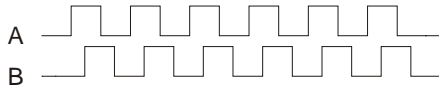
**MECHANICAL DIMENSIONS**

## OUTPUT WAVEFORMS

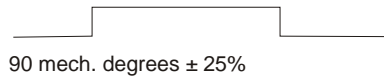


Rotation: Clockwise (cw) from shaftside

Standard :



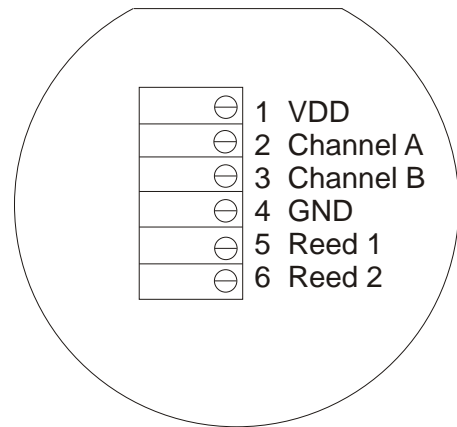
Rotation detector puls  
Reed contact



90 mech. degrees  $\pm$  25%

## CONNECTIONS

### Connection clamps on PCB



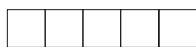
## ORDERING CODES

	Options	Ordering codes
Pulses pr. rev.:	No. of pulses	XXXXX
Output signal:	Standard (Normal)	N
	Line driver OL 7272 for extra long cable, up to 100 meters	M
	Line driver chip 26C31	L
Shaft dimensions:	Optional	XX
IP-rating:	IP 65	65
	IP 66	66
	IP 67	67
Cable take out:	Side	S

## PULSES/REV.

1	36	150	635	2500
2	40	180	720	3000
5	50	200	800	3600
6	60	250	1000	4000
8	64	300	1024	4096
10	75	360	1131	5000
15	80	400	1250	9000
16	90	455	1500	
20	100	500	2000	
25	125	600	2048	
30				
32				

2REXI



Pulses



Output signal



Shaft



IP-rating



Cable take out



**SCANCON**

SCANDINAVIAN CONSTRUCTION COMP. A/S  
TRANEVANG 1 · DK-3450 ALLERØD  
TLF. +45 48 17 27 02 · FAX +45 48 17 22 84

**SCANCON**  
Copyright by Scancon A/S ©  
September 2002, Rev. 02  
English Publication